

**EXHIBIT     A**

**PROPERTY DESCRIPTION**

**Parcel 1:**

West half of Lot 12, Block D, of the Carl T. Martin Unit of Gulf Shores, Alabama, as per map or plat thereof recorded in the Office of the Judge of Probate, Baldwin County, Alabama, in Map Book 3, page 54.

**Parcel 2:**

Lot 13A, Block D, of the Carl T. Martin Unit of Gulf Shores, Alabama, according to the plat thereof recorded on Slide 2157-D in the Office of the Judge of Probate, Baldwin County, Alabama, being a Subdivision of Lot 13, Block D, of the Carl T. Martin Unit of Gulf Shores, Alabama, according to the plat thereof recorded in Map Book 3, page 54, in the Office of the Judge of Probate, Baldwin County, Alabama.

**Parcel 3:**

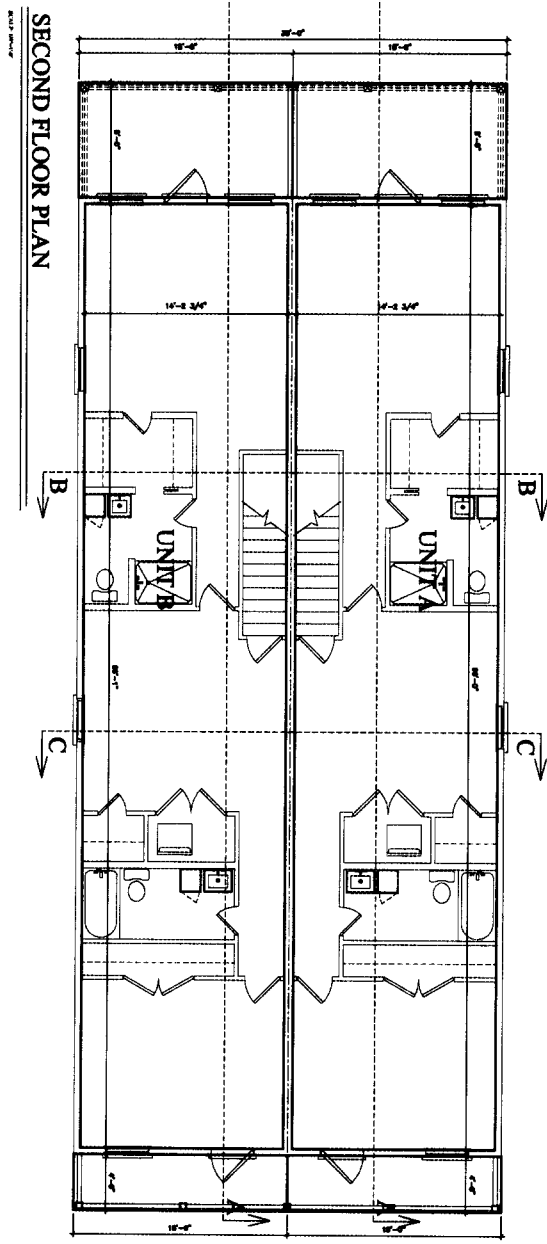
Lot 13B, Block D, of the Carl T. Martin Unit of Gulf Shores, Alabama, according to the plat thereof recorded on Slide 2157-D in the Office of the Judge of Probate, Baldwin County, Alabama, being a Subdivision of Lot 13, Block D, of the Carl T. Martin Unit of Gulf Shores, Alabama, according to the plat thereof recorded in Map Book 3, page 54, in the Office of the Judge of Probate, Baldwin County, Alabama.

**Parcel 4:**

East half of Lot 14, Block D, of the Carl T. Martin Unit of Gulf Shores, Alabama, as per map or plat thereof recorded in the Office of the Judge of Probate, Baldwin County, Alabama, in Map Book 3, page 54.







SECOND FLOOR PLAN

HORIZONTAL UNIT BOUNDARIES - UNIT 1384

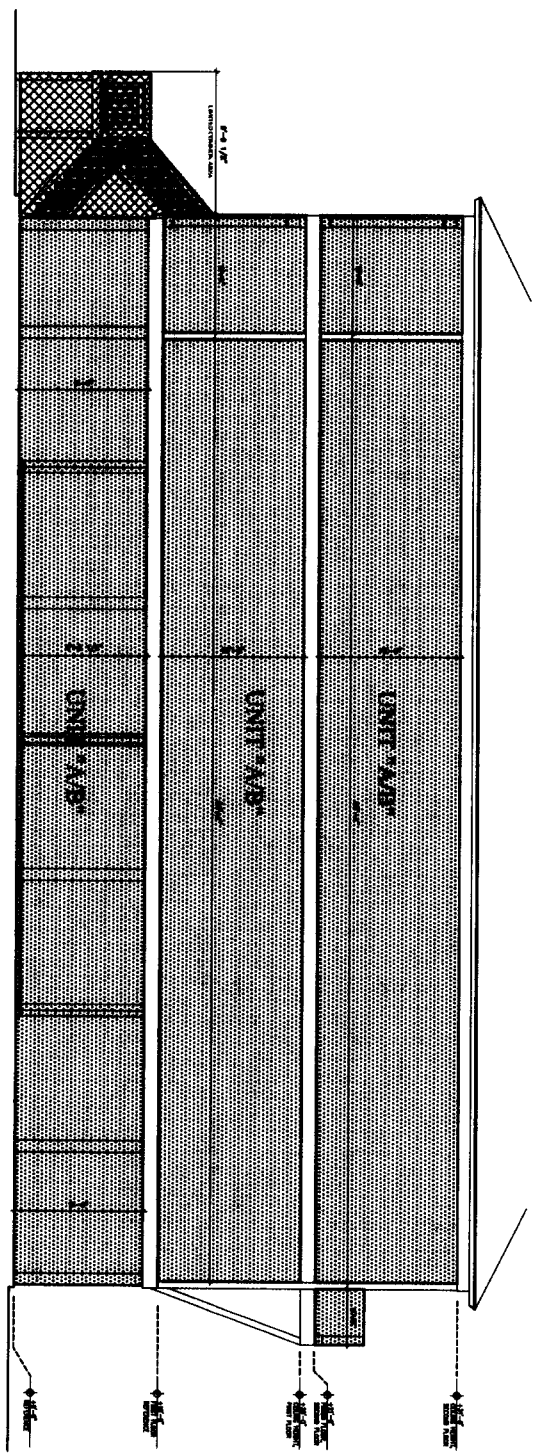
SHEET NO.  
2 of 3

DATE:  
8, DECEMBER 2005

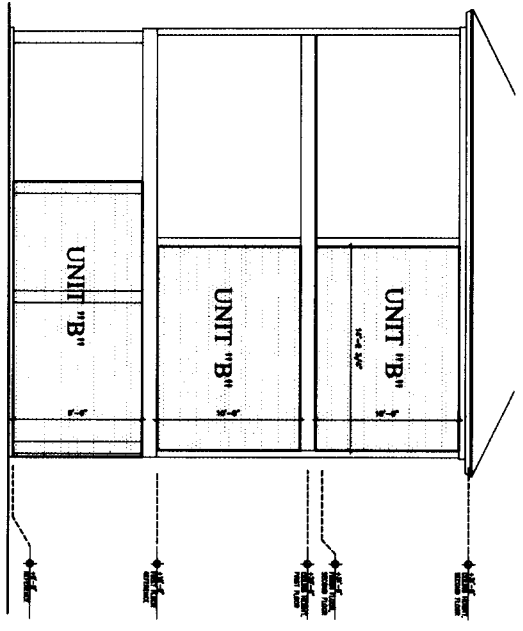
laguna sands condominium  
gulf shores, alabama



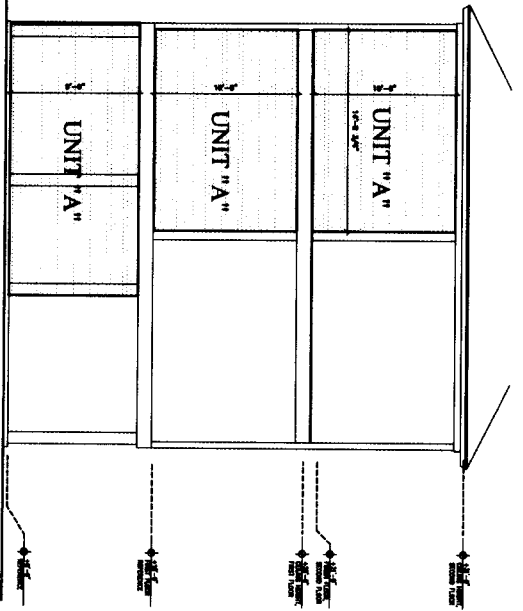
todd f. stewart  
architect  
218 north alison street, Foley, AL 36535  
251-970-2666 fax 251-970-2668 fax



SECTION A-A



SECTION B-B



SECTION C-C

VERTICAL UNIT BOUNDARIES- UNIT 1384

SHEET NO.  
3 of 3

DATE:  
5, DECEMBER 2005

laguna sands condominium  
gulf shores, alabama



todd f. stewart  
architect  
218 north alison street, Foley, al 36535  
251-776-2661 251-776-2662